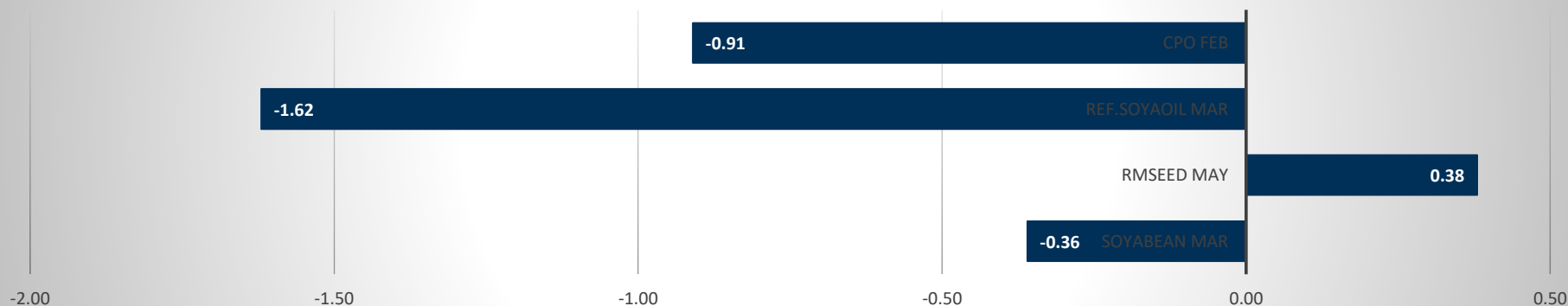


Commodity	Open	High	Low	Close	Rs.Chg	% Chg	Spot	Vol	OI	OI Chg	OI STATUS
Soyabean Mar	4727.00	4794.00	4727.00	4761.00	-17.00	-0.36	4899.00	45070	218930	3.63	Fresh Selling
Rmseed May	5197.00	5255.00	5190.00	5244.00	20.00	0.38	6474.25	1800	2960	4.59	Fresh Buying
Ref.Soyaoil Mar	1126.10	1132.00	1104.50	1110.10	-18.30	-1.62	1126.35	28860	35160	-0.11	Long Liquidation
Cpo Feb	1008.20	1021.00	997.30	1001.90	-9.20	-0.91	1011.30	3666	5244	-9.97	Long Liquidation

Commodity	Daily Levels								Trend	Performance			
	Close	Res - 3	Res - 2	Res - 1	Pivot	Sup - 1	Sup - 2	Sup - 3		1 Week	1 Month	3 Month	1 Year
Soyabean Mar	4761.00	4862.0	4828.0	4795.0	4761.0	4728.0	4694.0	4661.0	Negative	3.07	1.79	8.36	14.93
Rmseed May	5244.00	5335.0	5295.0	5270.0	5230.0	5205.0	5165.0	5140.0	Positive	3.18	-15.10	-19.11	22.73
Ref.Soyaoil Mar	1110.10	1156.0	1144.0	1128.0	1116.0	1100.0	1088.0	1072.0	Negative	1.38	-7.15	10.09	24.48
Cpo Feb	1001.90	1039.8	1030.4	1016.1	1006.7	992.4	983.0	968.7	Negative	5.67	0.25	13.01	24.94

## Price Movement

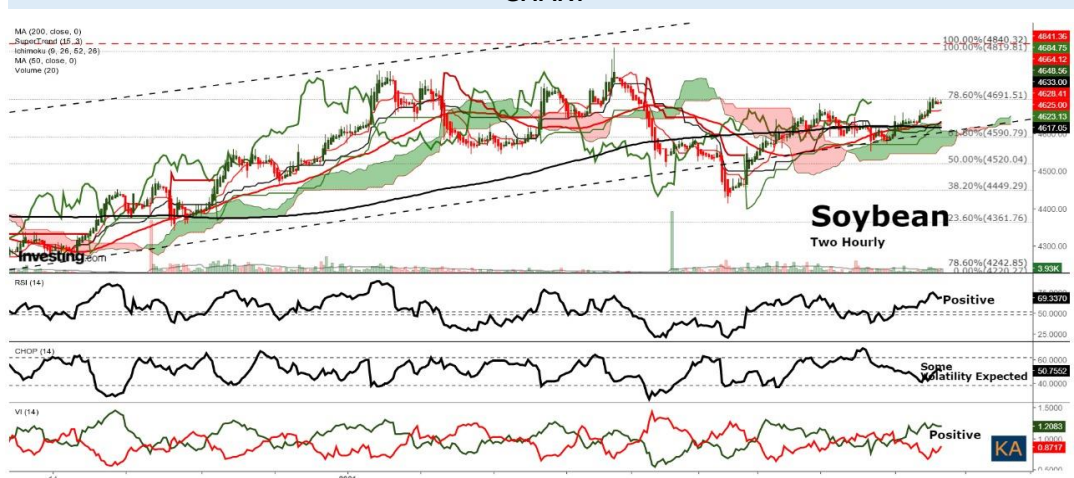


## DAILY SOYABEAN SYPNOSIS

Expiry	Open	High	Low	Close	Rs.Chg	% Chg	Spot	Vol	OI	OI Chg	Fut-Spot	OI STATUS
19 MAR 2021	4727.00	4794.00	4727.00	4761.00	-17.00	-0.36	4899.00	45070	218930	3.63	-138.00	Fresh Selling
20 APR 2021	4736.00	4790.00	4724.00	4752.00	-24.00	-0.50	4899.00	3930	28865	6.75	-147.00	Fresh Selling
20 MAY 2021	0.00	0.00	0.00	4810.00	0.00	0.00	4899.00	0	30	0.00	-89.00	Long Liquidation

- Soyabean trading range for the day is 4694-4828.
- Soyabean prices ended with losses as pressure seen after WASDE report showed bigger soybean carryout than estimated.
- Brazilian farmers had managed to double the area harvested to 4%, from 2% in the previous week this also weighing on soybean prices.
- However downside seen limited due to lower production and stock on both domestic and international.
- At the Indore spot market in top producer MP, soybean gained 32 Rupees to 4899 Rupees per 100 kgs.

### CHART



### TECHNICALS

#### Simple Moving Average

	5 Days	10 Days	20 Days	50 Days	100 Days	200 Days
Value	4625	4590	4610	4509	4351	4066
Signal	BUY	BUY	BUY	BUY	BUY	BUY

#### Exponential Moving Average

	5 Days	10 Days	20 Days	50 Days	100 Days	200 Days
Value	4637	4616	4597	4516	4370	4190
Signal	BUY	BUY	BUY	BUY	BUY	BUY

#### Spread

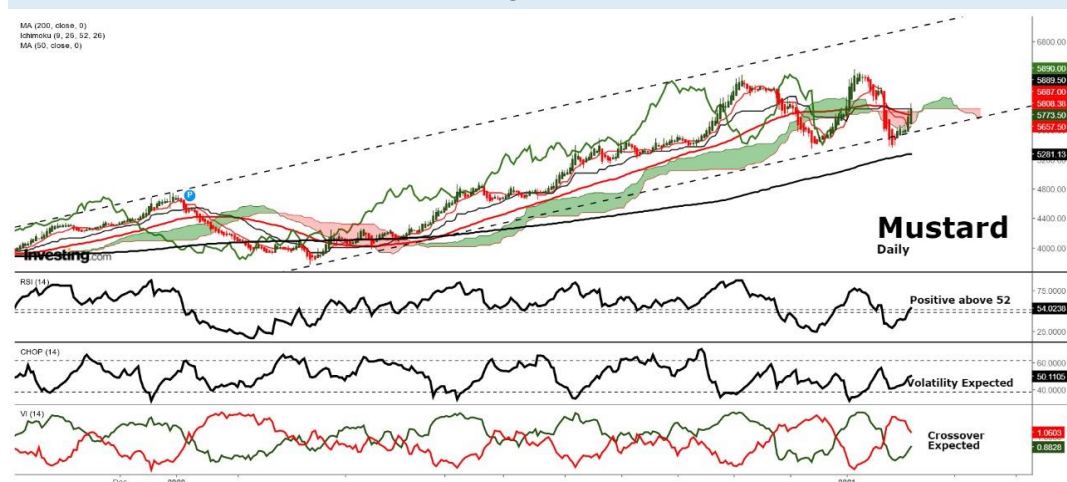
Month	Rate	MAR	APR	MAY
MAR	4761		-9	49
APR	4752			58
MAY	4810			

## DAILY RMSEED SYNOPSIS

Expiry	Open	High	Low	Close	Rs.Chg	% Chg	Spot	Vol	OI	OI Chg	Fut-Spot	OI STATUS
15 MAR 2021	5197.00	5255.00	5190.00	5244.00	20.00	0.38	6474.25	1800	2960	4.59	-1230.25	Fresh Buying
18 JUN 2021	0.00	0.00	0.00	5150.00	0.00	0.00	6474.25	0	110	0.00	-1324.25	Long Liquidation
0-Jan-00	0.00	0.00	0.00	0.00	0.00	0.00	6474.25	0	0	0.00	-6474.25	Long Liquidation

- Rmseed trading range for the day is 5165-5295.
- Mustard seed gained amid crop damage in north due to cold waves.
- New mustard arrivals will start in Uttar Pradesh's mandis.
- Production area of the Rabi season has reached a height of 73.94 lakh hectare
- In Alwar spot market in Rajasthan the prices gained 52.15 Rupees to end at 6474.25 Rupees per 100 kg.

## CHART



## TECHNICALS

### Simple Moving Average

5 Days	10 Days	20 Days	50 Days	100 Days	200 Days
5088	5052	5139	5452	5613	5180
BUY	BUY	SELL	SELL	SELL	SELL

### Exponential Moving Average

5 Days	10 Days	20 Days	50 Days	100 Days	200 Days
5090	5095	5181	5387	5421	5204
BUY	BUY	SELL	SELL	SELL	SELL

### Spread

Month	Rate	MAY	JUN	0
MAY	5244		-94	-5244
JUN	5150			-5150
0	0			

## DAILY SOYOIL SYPNOSIS

Expiry	Open	High	Low	Close	Rs.Chg	% Chg	Spot	Vol	OI	OI Chg	Fut-Spot	OI STATUS
15 MAR 2021	1126.10	1132.00	1104.50	1110.10	-18.30	-1.62	1126.35	28860	35160	-0.11	-16.25	Long Liquidation
20 APR 2021	1111.80	1117.00	1092.50	1097.40	-19.30	-1.73	1126.35	1510	4805	5.26	-28.95	Fresh Selling
20 MAY 2021	1106.90	1107.20	1090.00	1097.30	-16.10	-1.45	1126.35	65	55	175.00	-29.05	Fresh Selling

- Ref.Soya oil trading range for the day is 1088-1144.
- Ref soyoil prices dropped after update that India's edible oil consumption is expected to contract for the second straight year in 2020/21
- Edible oil consumption could fall to 21 million tonnes in 2019/20 marketing year ending on Oct. 31 from 22 million a year earlier
- Soyoil imports could drop marginally from last year's 3.4 million tonnes
- At the Indore spot market in Madhya Pradesh, soyoil was steady at 1126.35 Rupees per 10 kgs.

### CHART



### TECHNICALS

#### Simple Moving Average

5 Days	10 Days	20 Days	50 Days	100 Days	200 Days
1102.3	1087.3	1099.9	1103.1	1033.1	929.4
BUY	BUY	BUY	BUY	BUY	BUY

#### Exponential Moving Average

5 Days	10 Days	20 Days	50 Days	100 Days	200 Days
1100.2	1097.2	1101.3	1088.6	1040.5	968.5
BUY	BUY	BUY	BUY	BUY	BUY

#### Spread

Month	Rate	MAR	APR	MAY
MAR	1110.1		-12.7	-12.8
APR	1097.4			-0.1
MAY	1097.3			

## DAILY CRUDE PALM OIL SYPNOSIS

Expiry	Open	High	Low	Close	Rs.Chg	% Chg	Spot	Vol	OI	OI Chg	Fut-Spot	OI STATUS
15 MAR 2021	1008.20	1021.00	997.30	1001.90	-9.20	-0.91	1011.30	3666	5244	-9.97	-9.40	Long Liquidation
31 MAR 2021	998.00	1013.10	989.60	994.20	-7.50	-0.75	1011.30	2468	5833	3.35	-17.10	Fresh Selling
30 APR 2021	975.50	990.30	969.00	974.80	-8.10	-0.82	1011.30	365	890	20.11	-36.50	Fresh Selling

- CPO trading range for the day is 983-1030.4.
- Crude palm oil dropped after Malaysia's palm oil inventories rose more than expected in January as exports plunged to a near 14-year low
- Stockpile in the world's second largest producer increased 4.7% to reach 1.32 million tonnes at the end of January from the month prior
- Crude palm oil production fell more than expected to its lowest since February 2016. It slumped 15.5% in January to 1.13 million tonnes
- In spot market, Crude palm oil dropped by -2.5 Rupees to end at 1011.3 Rupees.

### CHART



### TECHNICALS

#### Simple Moving Average

5 Days	10 Days	20 Days	50 Days	100 Days	200 Days
980.7	958.0	957.9	941.4	886.0	792.5
BUY	BUY	BUY	BUY	BUY	BUY

#### Exponential Moving Average

5 Days	10 Days	20 Days	50 Days	100 Days	200 Days
976.2	966.9	960.2	938.4	893.4	825.9
BUY	BUY	BUY	BUY	BUY	BUY

#### Spread

Month	Rate	FEB	MAR	APR
FEB	1001.9		-7.7	-27.1
MAR	994.2			-19.4
APR	974.8			

## SOYABEAN PRICE MOVEMENT SINCE 2012

Year						Sowing		Growth	Harvesting				Crop Calendar
	JAN	FEB	MAR	APR	MAY	JUN	JUL	AUG	SEP	OCT	NOV	DEC	
2012	2451.50	2668.50	3085.50	3625.00	3404.00	3968.50	4370.50	3947.50	3201.50	3298.00	3209.50	3203.00	689.00
	-2.49	8.85	15.63	17.49	-6.10	16.58	10.13	-9.68	-18.90	3.01	-2.68	-0.20	27.41
2013	3287.50	3324.50	3641.00	3932.00	3810.00	3670.50	2973.00	3470.00	3531.00	3925.00	3860.00	3819.00	616.00
	2.64	1.13	9.52	7.99	-3.10	-3.66	-19.00	16.72	1.76	11.16	-1.66	-1.06	19.23
2014	3926.50	4165.00	4311.50	4777.50	4592.00	4094.00	3639.00	3358.00	2963.00	3289.00	3300.00	3366.00	-453.00
	2.81	6.07	3.52	10.81	-3.88	-10.84	-11.11	-7.72	-11.76	11.00	0.33	2.00	-11.86
2015	3434.00	3406.00	3458.00	4025.00	3890.00	3329.00	3160.00	3218.00	3429.00	3909.00	3907.00	3880.00	514.00
	2.02	-0.82	1.53	16.40	-3.35	-14.42	-5.08	1.84	6.56	14.00	-0.05	-0.69	15.27
2016	3726.00	3664.00	4010.00	3927.00	3835.00	3740.00	3557.00	3257.00	3235.00	3114.00	3116.00	3029.00	-851.00
	-3.97	-1.66	9.44	-2.07	-2.34	-2.48	-4.89	-8.43	-0.68	-3.74	0.06	-2.79	-21.93
2017	3092.00	3007.00	2941.00	3002.00	2762.00	2925.00	3154.00	3097.00	3033.00	2823.00	3098.00	3118.00	89.00
	2.08	-2.75	-2.19	2.07	-7.99	5.90	7.83	-1.81	-2.07	-6.92	9.74	0.65	2.94
2018	3685.00	3802.00	3756.00	3669.00	3549.00	3566.00	3392.00	3222.00	3233.00	3269.00	3354.00	3399.00	281.00
	18.18	3.18	-1.21	-2.32	-3.27	0.48	-4.88	-5.01	0.34	1.11	2.60	1.34	9.01
2019	3826.00	3637.00	3681.00	3676.00	3718.00	3671.00	3582.00	3825.00	3939.00	3863.00	4072.00	4436.00	1037.00
	12.56	-4.94	1.21	-0.14	1.14	-1.26	-2.42	6.78	2.98	-1.93	5.41	8.94	30.51
2020	4084.00	3708.00	3796.00	3810.00	3830.00	3714.00	3780.00	4116.00	3866.00	4263.00	4415.00	4606.00	170.00
	-7.94	-9.21	2.37	0.37	0.52	-3.03	1.78	8.89	-6.07	10.27	3.57	4.33	3.83
2021	4644.00												38.00
	0.83												0.83

## RMSEED PRICE MOVEMENT SINCE 2012

Year	Growth		Harvesting										Sowing			Crop Calendar
	JAN	FEB	MAR	APR	MAY	JUN	JUL	AUG	SEP	OCT	NOV	DEC				
2012	3346.00 1.06	3632.00 8.55	3925.00 8.07	4130.00 5.22	3901.00 -5.54	3990.00 2.28	4397.00 10.20	4452.00 1.25	3927.00 -11.79	4269.00 8.71	4214.00 -1.29	3544.00 -15.90	233.00 7.04			
2013	3492.00 -1.47	3428.00 -1.83	3479.00 1.49	3505.00 0.75	3514.00 0.26	3451.00 -1.79	3182.00 -7.79	3571.00 12.23	3641.00 1.96	3878.00 6.51	3811.00 -1.73	3469.00 -8.97	-75.00 -2.12			
2014	3353.00 -3.34	3537.00 5.49	3504.00 -0.93	3594.00 2.57	3456.00 -3.84	3595.00 4.02	3641.00 1.28	3592.00 -1.35	3693.00 2.81	3763.00 1.90	3885.00 3.24	3524.00 -9.29	55.00 1.59			
2015	3378.00 -4.14	3406.00 0.83	3411.00 0.15	3869.00 13.43	4306.00 11.29	4255.00 -1.18	4232.00 -0.54	4317.00 2.01	4514.00 4.56	4923.00 9.06	4897.00 -0.53	4244.00 -13.33	720.00 20.43			
2016	3877.00 -8.65	3929.00 1.34	4202.00 6.95	4472.00 6.43	4503.00 0.69	4848.00 7.66	4875.00 0.56	4681.00 -3.98	4642.00 -0.83	4498.00 -3.10	4876.00 8.40	3974.00 -18.50	604.00 14.23			
2017	3834.00 -3.52	3848.00 0.37	3908.00 1.56	3759.00 -3.81	3483.00 -7.34	3609.00 3.62	3699.00 2.49	3771.00 1.95	3739.00 -0.85	3897.00 4.23	4104.00 5.31	3939.00 -4.02	-35.00 -0.88			
2018	4187.00 6.30	4125.00 -1.48	4054.00 -1.72	3795.00 -6.39	3958.00 4.30	4027.00 1.74	4214.00 4.64	4070.00 -3.42	4241.00 4.20	4170.00 -1.67	3977.00 -4.63	3929.00 -1.21	-10.00 -0.25			
2019	3983.00 1.37	3840.00 -3.59	3750.00 -2.34	3744.00 -0.16	3718.00 -0.69	3939.00 5.94	3950.00 0.28	3922.00 -0.71	3954.00 0.82	4306.00 8.90	4321.00 0.35	4658.00 7.80	729.00 18.55			
2020	4109.00 -11.79	4000.00 -2.65	4118.00 2.95	4141.00 0.56	4490.00 8.43	4650.00 3.56	5014.00 7.83	5410.00 7.90	5468.00 1.07	6067.00 10.95	5871.00 -3.23	5817.00 -0.92	1159.00 24.88			
2021	5604.00 -3.66												-213.00 -3.66			

## SOYOIL PRICE MOVEMENT SINCE 2012

	JAN	FEB	MAR	APR	MAY	JUN	JUL	AUG	SEP	OCT	NOV	DEC	Growth
2012	683.15	712.75	751.40	775.70	735.65	761.50	784.85	792.20	663.20	686.70	720.25	695.80	-37.70
	-6.86	4.33	5.42	3.23	-5.16	3.51	3.07	0.94	-16.28	3.54	4.89	-3.39	-5.52
2013	737.35	680.85	688.10	719.30	715.05	673.00	651.95	703.20	686.20	748.85	713.80	698.10	2.30
	5.97	-7.66	1.06	4.53	-0.59	-5.88	-3.13	7.86	-2.42	9.13	-4.68	-2.20	0.31
2014	683.55	716.65	705.45	718.50	676.60	693.45	676.60	610.65	614.00	599.85	576.80	638.05	-60.05
	-2.08	4.84	-1.56	1.85	-5.83	2.49	-2.43	-9.75	0.55	-2.30	-3.84	10.62	-8.79
2015	620.10	595.40	583.60	582.50	613.00	588.15	574.70	574.15	598.05	611.30	619.65	614.50	-23.55
	-2.81	-3.98	-1.98	-0.19	5.24	-4.05	-2.29	-0.10	4.16	2.22	1.37	-0.83	-3.80
2016	610.10	617.40	642.50	657.60	656.95	644.10	631.30	645.95	661.45	674.30	727.65	706.95	92.45
	-0.72	1.20	4.07	2.35	-0.10	-1.96	-1.99	2.32	2.40	1.94	7.91	-2.84	15.15
2017	686.10	664.35	623.10	610.85	622.80	641.90	657.35	664.05	664.70	686.10	746.45	727.50	20.55
	-2.95	-3.17	-6.21	-1.97	1.96	3.07	2.41	1.02	0.10	3.22	8.80	-2.54	3.00
2018	743.85	760.85	786.85	764.75	776.40	756.20	742.30	739.75	748.30	754.85	719.95	730.10	2.60
	2.25	2.29	3.42	-2.81	1.52	-2.60	-1.84	-0.34	1.16	0.88	-4.62	1.41	0.35
2019	775.80	756.85	728.75	740.05	755.30	745.10	733.90	755.05	764.50	773.65	814.40	933.20	203.10
	6.26	-2.44	-3.71	1.55	2.06	-1.35	-1.50	2.88	1.25	1.20	5.27	14.59	26.18
2020	851.20	767.60	828.00	787.20	785.20	799.10	864.70	892.90	904.10	963.40	1072.30	1190.10	256.90
	-8.79	-9.82	7.87	-4.93	-0.25	1.77	8.21	3.26	1.25	6.56	11.30	10.99	30.18
2021	1105.50												-84.60
	-7.11												-7.65



## CPO PRICE MOVEMENT SINCE 2011

	JAN	FEB	MAR	APR	MAY	JUN	JUL	AUG	SEP	OCT	NOV	DEC	Growth
2011	559.50	539.80	510.70	521.20	535.80	478.40	487.40	490.20	480.80	475.70	508.90	545.40	0.60
	2.70	-3.52	-5.39	2.06	2.80	-10.71	1.88	0.57	-1.92	-1.06	6.98	7.17	0.11
2012	514.20	536.20	592.30	621.50	585.90	566.40	564.40	551.60	446.20	425.20	423.20	417.90	-127.50
	-5.72	4.28	10.46	4.93	-5.73	-3.33	-0.35	-2.27	-19.11	-4.71	-0.47	-1.25	-23.38
2013	438.20	450.80	454.90	464.90	480.50	502.20	496.60	568.70	532.40	557.20	558.30	540.20	122.30
	4.86	2.88	0.91	2.20	3.36	4.52	-1.12	14.52	-6.38	4.66	0.20	-3.24	29.27
2014	524.00	590.00	569.70	567.70	524.90	535.00	539.10	439.60	474.50	457.20	439.50	460.60	-79.60
	-3.00	12.60	-3.44	-0.35	-7.54	1.92	0.77	-18.46	7.94	-3.65	-3.87	4.80	-14.74
2015	425.00	466.10	434.40	435.40	456.80	451.40	417.60	360.50	425.70	400.80	382.40	411.00	-49.60
	-7.73	9.67	-6.80	0.23	4.92	-1.18	-7.49	-13.67	18.09	-5.85	-4.59	7.48	-10.77
2016	432.50	481.90	532.20	564.00	537.00	506.80	524.70	559.10	581.60	514.90	554.70	582.70	171.70
	5.23	11.42	10.44	5.98	-4.79	-5.62	3.53	6.56	4.02	-11.47	7.73	5.05	41.78
2017	587.50	544.90	538.80	516.80	512.70	490.80	488.70	518.20	547.80	545.30	589.60	554.60	-28.10
	0.82	-7.25	-1.12	-4.08	-0.79	-4.27	-0.43	6.04	5.71	-0.46	8.12	-5.94	-4.82
2018	560.60	587.50	651.80	642.60	653.10	643.40	616.80	599.50	594.00	593.50	500.70	511.60	-43.00
	1.08	4.80	10.94	-1.41	1.63	-1.49	-4.13	-2.80	-0.92	-0.08	-15.64	2.18	-7.75
2019	569.40	550.10	525.90	529.70	519.30	515.80	513.60	522.20	546.60	587.90	680.00	795.20	283.60
	11.30	-3.39	-4.40	0.72	-1.96	-0.67	-0.43	1.67	4.67	7.56	15.67	16.94	55.43
2020	771.80	648.60	663.50	609.00	658.20	646.20	731.80	764.90	754.90	817.50	883.70	977.80	182.60
	-2.94	-15.96	2.30	-8.21	8.08	-1.82	13.25	4.52	-1.31	8.29	8.10	10.65	22.96
2020	969.30												-8.50
	-0.87												-0.87

## KEDIA ADVISORY

KEDIA STOCKS & COMMODITIES RESEARCH PVT LTD.  
Mumbai. INDIA.

For more details, please contact:  
Mobile: +91 9323406035 / 9320096333 / 9619551022  
Email: [info@kediaadvisory.com](mailto:info@kediaadvisory.com)  
URL: [www.kediaadvisory.com](http://www.kediaadvisory.com)  
SEBI REGISTRATION NUMBER - INH000006156

General Disclaimers: This Report is prepared and distributed by Kedia Stocks & Commodities Research Pvt Ltd. for information purposes only. The recommendations, if any, made herein are expression of views and/or opinions and should not be deemed or construed to be neither advice for the purpose of purchase or sale through KSCRPL nor any solicitation or offering of any investment /trading opportunity. These information / opinions / views are not meant to serve as a professional investment guide for the readers. No action is solicited based upon the information provided herein. Recipients of this Report should rely on information/data arising out of their own investigations. Readers are advised to seek independent professional advice and arrive at an informed trading/investment decision before executing any trades or making any investments. This Report has been prepared on the basis of publicly available information, internally developed data and other sources believed by KSCRPL to be reliable. KSCRPL or its directors, employees, affiliates or representatives do not assume any responsibility for, or warrant the accuracy, completeness, adequacy and reliability of such information / opinions / views. While due care has been taken to ensure that the disclosures and opinions given are fair and reasonable, none of the directors, employees, affiliates or representatives of KSCRPL shall be liable for any direct, indirect, special, incidental, consequential, punitive or exemplary damages, including lost profits arising in any way whatsoever from the information / opinions / views contained in this Report. The possession, circulation and/or distribution of this Report may be restricted or regulated in certain jurisdictions by appropriate laws. No action has been or will be taken by KSCRPL in any jurisdiction (other than India), where any action for such purpose(s) is required. Accordingly, this Report shall not be possessed, circulated and/ or distributed in any such country or jurisdiction unless such action is in compliance with all applicable laws and regulations of such country or jurisdiction. KSCRPL requires such recipient to inform himself about and to observe any restrictions at his own expense, without any liability to KSCRPL. Any dispute arising out of this Report shall be subject to the exclusive jurisdiction of the Courts in India.















